

WALL / CEILING MOUNT SPEAKER

SMM6/T



DESCRIPTION:

The SMM6/T is a 6W 100V surface mount loudspeaker which has a 6.5" (165mm) full-range chassis providing excellent sound quality with speech and background music, and which is certified to EN54-24. The speaker is fitted with a 100V transformer which has three power adjustment tapings of 6W, 3W and 1.5W.

The SMM6/T has a rectangular powder coated metal chassis and grille, with the high quality powder coated finish giving good long-term protection and resistance to corrosion. The enclosure is ingress protection rated to IP21C and is coloured to match RAL9010 'Pure White'.

Surface mounting to a wall or ceiling is simply provided through the use of fixing screws, with the enclosure front attaching to the rear mounting panel with three screws. The 100V loudspeaker line cabling is connected by means of a two-pin ceramic block, and for additional reliability a thermal fuse is provided and the speaker chassis is damp-resistant.

This loudspeaker is optionally available with a DC blocking capacitor fitted, in order to provide compatibility with DC loudspeaker line monitoring systems. EASE data is available for this speaker on request.

FEATURES:

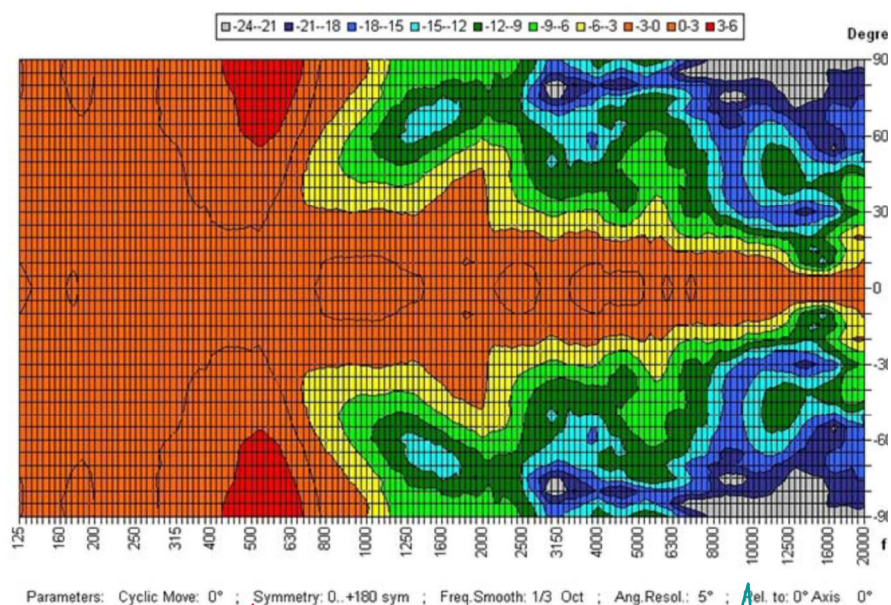
- 6W 100V Loudspeaker
- Size 6.5" (165mm)
- Surface Mount
- Vandal-Resistant
- Excellent Sound Quality
- Fully Certified To EN54-24

WALL / CEILING MOUNT SPEAKER

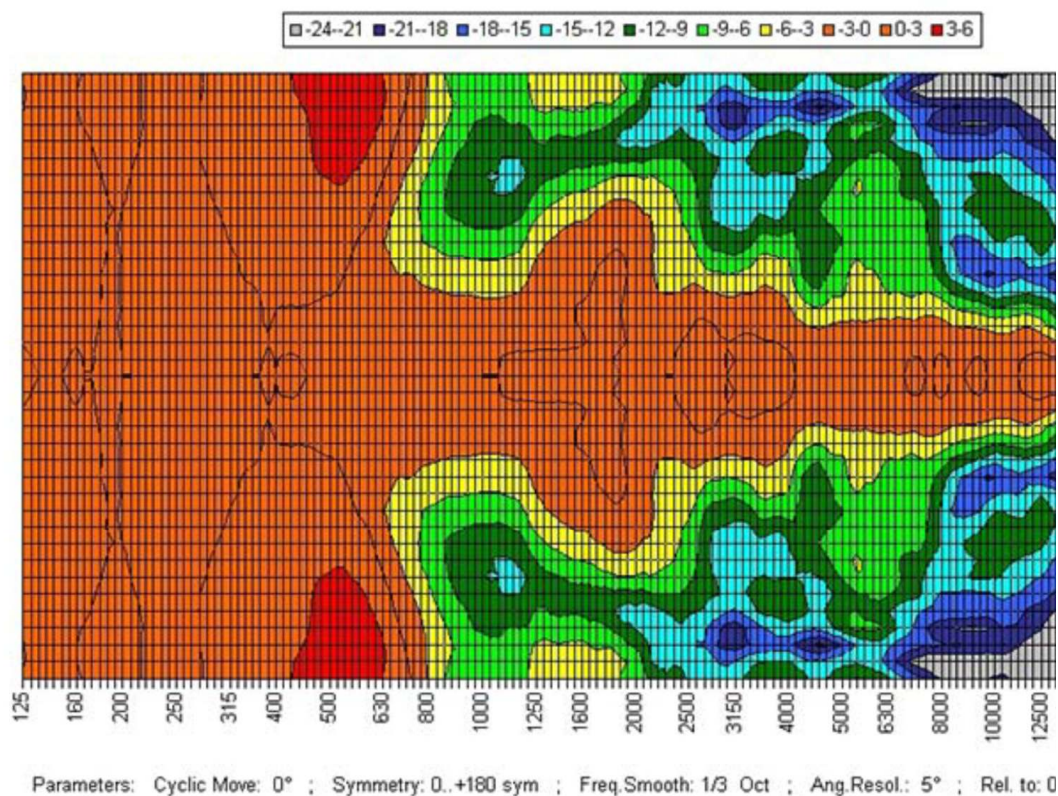
SPECIFICATION:

Model	SMM6/T
Power Tappings	6W / 3W / 1.5W
Frequency Range	170 — 18.500 Hz
Frequency Response	70 — 23,500 Hz
SPL 1W / 1m, peak	98.3 dB
SPL , 1W / 4m, peak	86.3 dB
SPL Pmax / 4m, peak	94.0 dB
Sensitivity EN54-24, 1W / 4m	79.6 dB
Dispersion (-6dB, 500Hz)	180° (horizontal) / 180° (vertical)
Dispersion (-6dB, 1KHz)	84° (horizontal) / 69° (vertical)
Dispersion (-6dB, 2KHz)	119° (horizontal) / 119° (vertical)
Dispersion (-6dB, 4KHz)	62° (horizontal) / 79° (vertical)
Temperature range	-20 / +80 °C
Dimensions	253 x 193 x 81.5mm
Weight (net)	1.90 kg
Colour	RAL9010 'Pure White'
Connector	2-pin ceramic block
Mounting	Screws

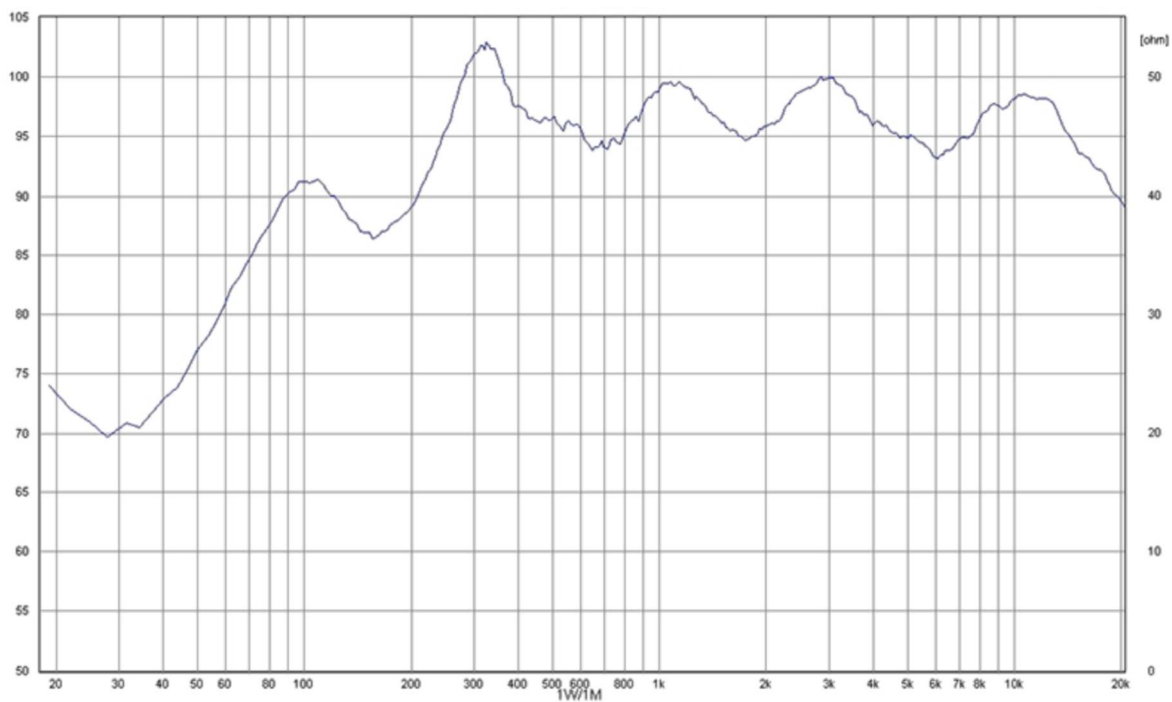
POLAR DIAGRAM:



WALL / CEILING MOUNT SPEAKER

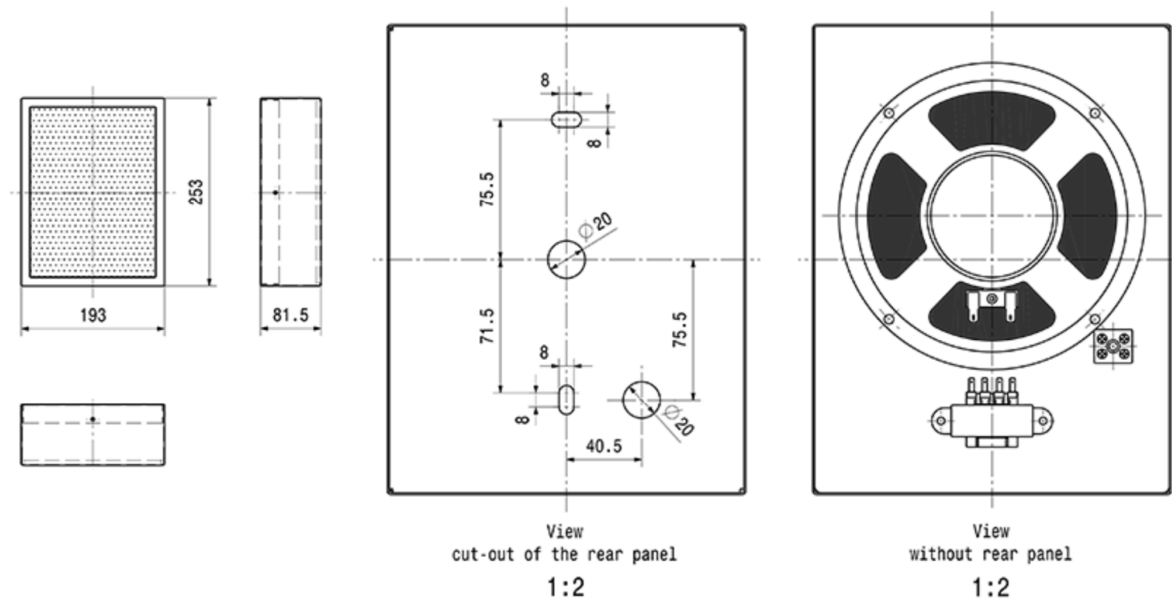


FREQUENCY RESPONSE DIAGRAM:



WALL / CEILING MOUNT SPEAKER

DIMENSIONAL DIAGRAM



Disclaimer: As per our company policy one of the constant product improvements the right is there for reserved to modify the product specification without prior notice and the picture shown in the datasheet is a design base, the actual picture may vary.